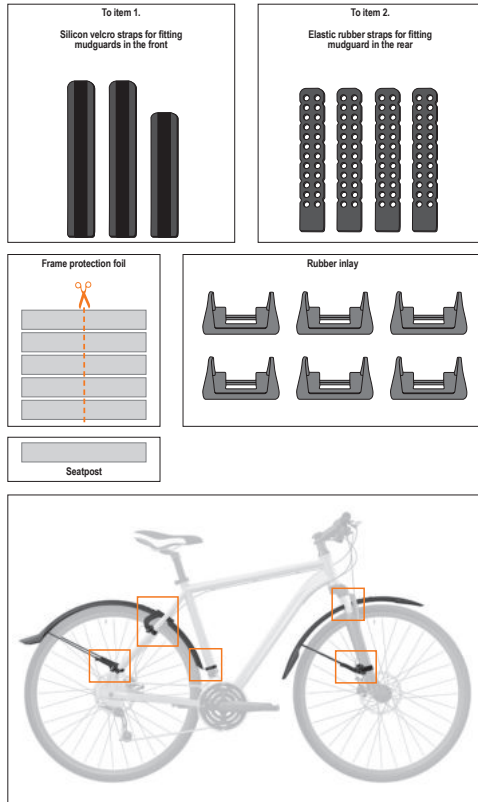
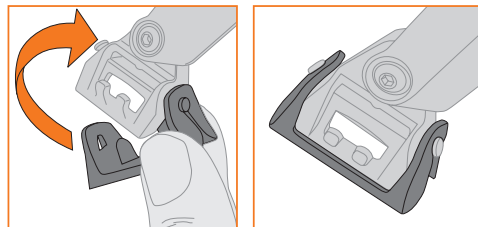


Parts

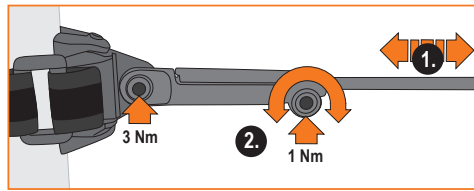
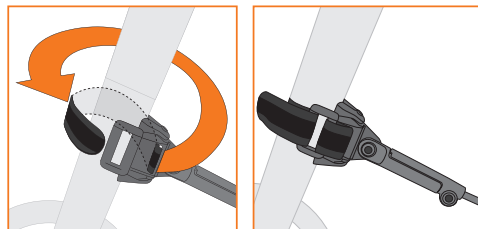


1. Fender-assembling front

1.1 Preperation: mouting rubber inlay



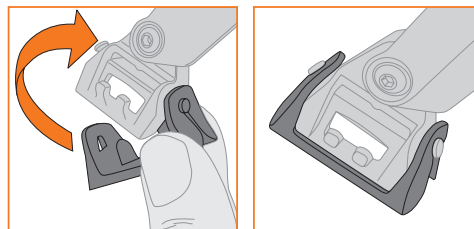
1.2



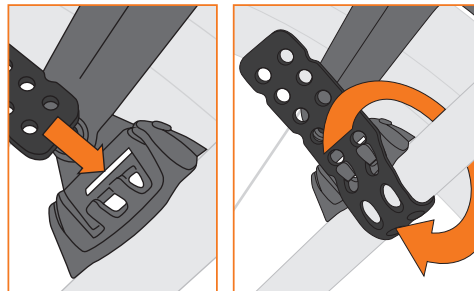
2. Fender-assembling rear



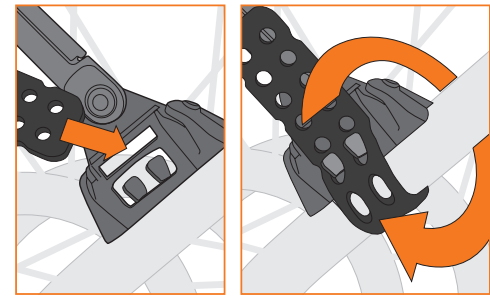
2.1 Preperation: mounting rubber inlay



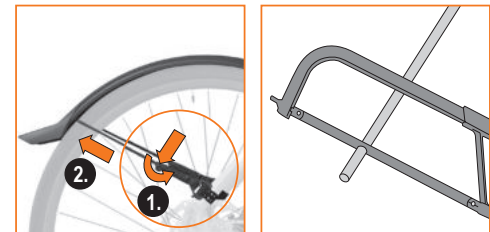
2.2



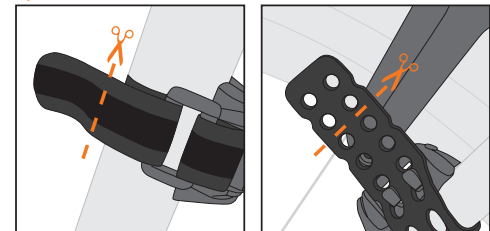
2.3



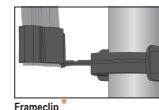
3. Cut stays



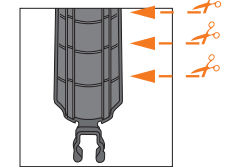
Optional



* Only suitable for VELO 65 series



Frameclip



Cutting lines

ATTENTION!
Keep the minimum distance of 15 mm between fender and tyre.

