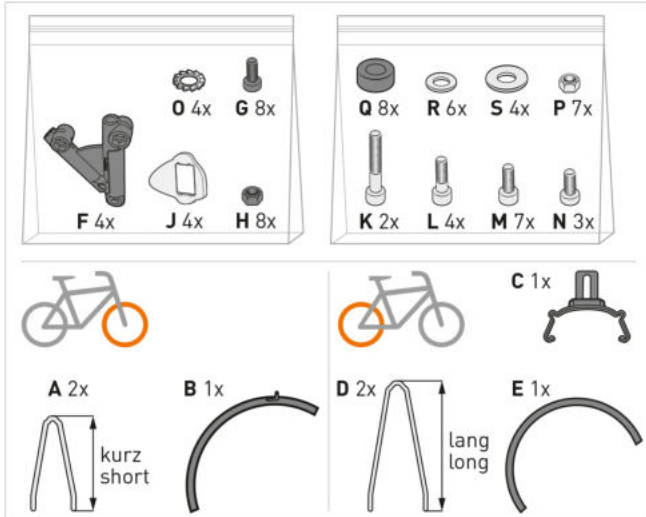
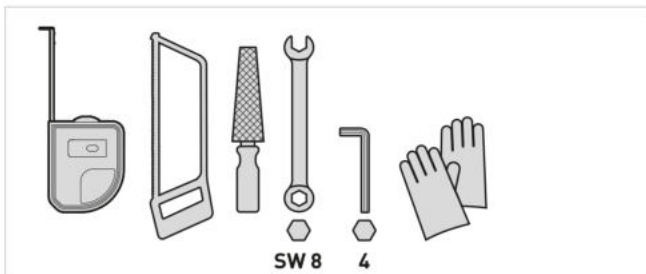


EN . Scope of delivery

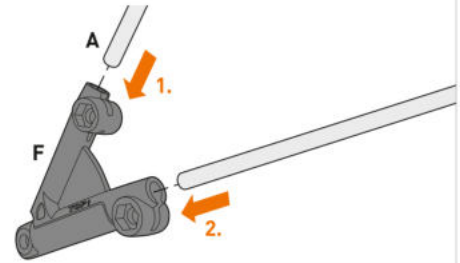


EN . Tools

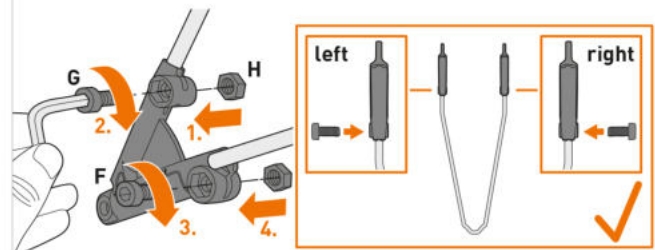


EN . Front wheel mounting

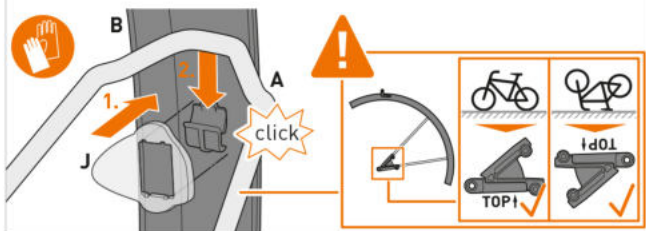
**01 EN** Insert the short struts (A) into the ESC V adapter (F).  
**Please note.** The marking (TOP↑) of the ESC V adapter must point in the direction of the handlebar.



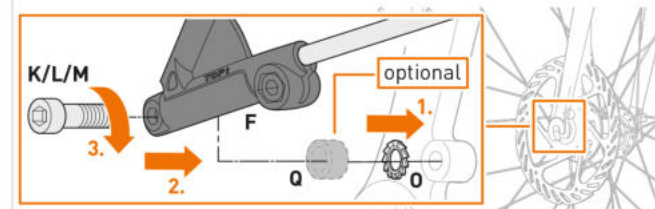
**02 EN** Screw on the ESC V adapter (F) hand-tight with screws (G) and nuts (H).  
**Please note.** On both sides, the screws must be inserted into the ESC V adapters from the outside.



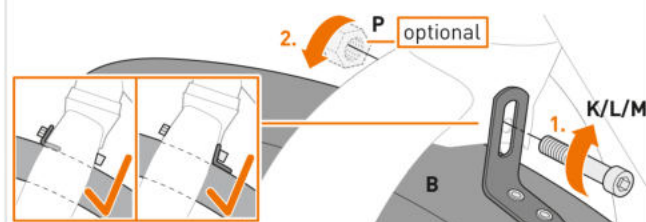
**03 EN** Place the damping rubbers (J) on the clips in the wheel guard (B) and audibly engage the struts (A).  
**Please note.** The marking (TOP↑) of the ESC V adapter must point in the direction of the handlebar.



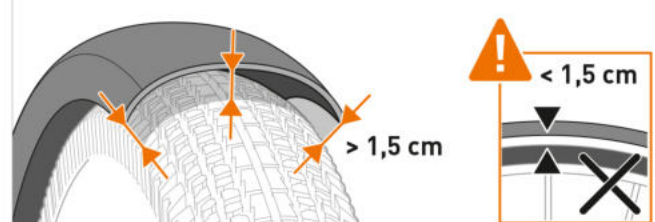
**05 EN** Screw the ESC V adapter (F) hand-tight to the fork with the screw (K/L/M) and the serrated lock washer (O).  
 Optionally, use spacer (Q).  
**Please note.** In the case of forks with a bore in the direction of travel, an accessory kit is required.



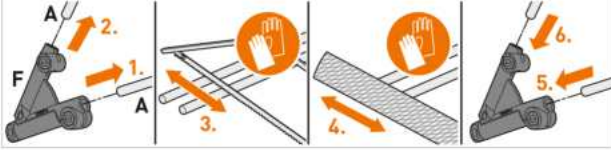
**04 EN** Screw the bracket of the wheel guard (B) hand-tight to the bicycle fork with the screw (K/L/M). Optionally, use nut (P).



**06 EN** Adjust the distance between the wheel guard and the tyre to approx. 1.5 cm.



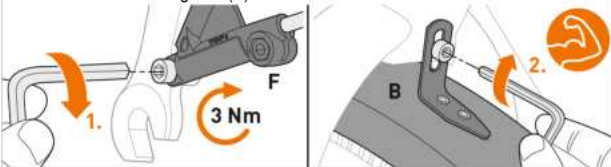
**i EN**  
If struts (A) are too long, pull them out of the ESC V adapter (F), shorten them with a metal saw and deburr the cuts.



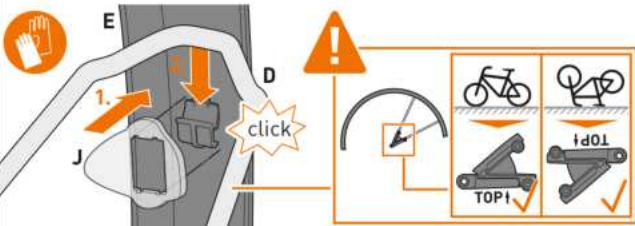
**07 EN**  
Firmly tighten all screws on the struts (A) with 1 Nm.



**08 EN**  
Firmly tighten the ESC V adapters (F) with 3 Nm. Firmly tighten the screw on the wheel guard (B).

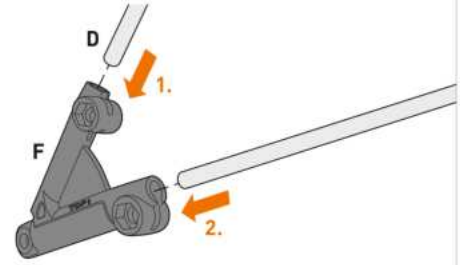


**03 EN**  
Place the damping rubbers (J) on the clips in the wheel guard (E) and audibly engage the struts (D).  
**Please note.** The marking (TOP↑) of the ESC adapter must point in the direction of the saddle.

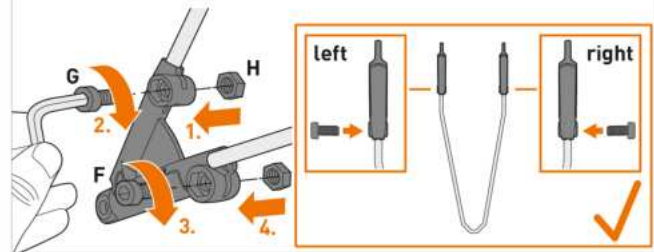


**EN . Rear wheel mounting**

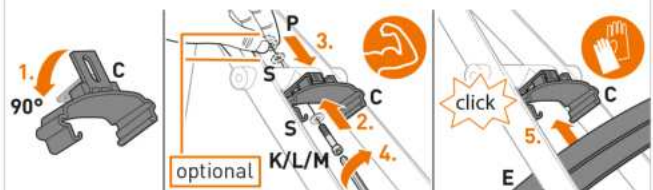
**01 EN**  
Insert the long struts (D) into the ESC V-adapter (F). Please note. **Please note.** The marking (TOP↑) of the ESC adapter must point in the direction of the saddle.



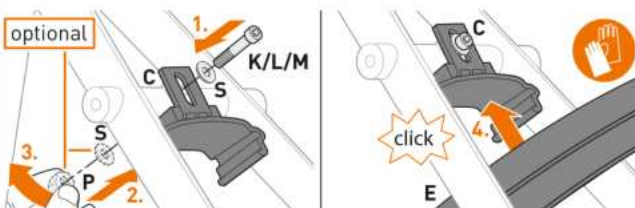
**02 EN**  
Screw on the ESC V adapter (F) hand-tight with screw (G) and nut (H). **Please note.** On both sides, the screws must be inserted into the ESC V adapters from the outside.



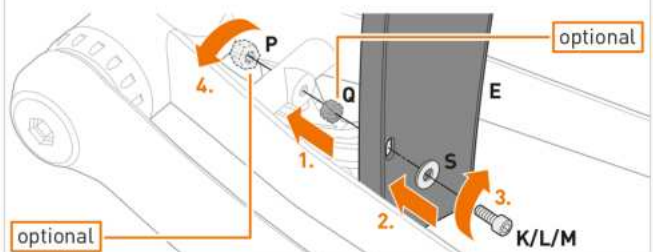
**04 EN**  
**Please note.** Remove the rear wheel.  
**B** Fold down the tab on the sliding bridge (C). Firmly tighten the sliding bridge (C) to the crossbar between the seat stays using the screw (K/L/M) and washer (S). Optionally, use nut (P). Clip the wheel guard (E) into the sliding bridge (C).



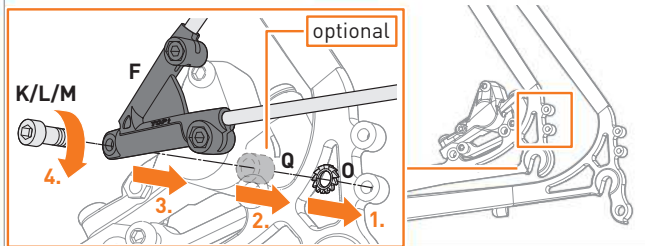
**04 EN**  
**Please note.** Remove the rear wheel.  
**A** Screw the sliding bridge (C) with screw (K/L/M) and washer (S) hand-tight to the crossbar between the seat stays. Optionally, use nut (P). Clip the wheel guard (E) into the sliding bridge (C).



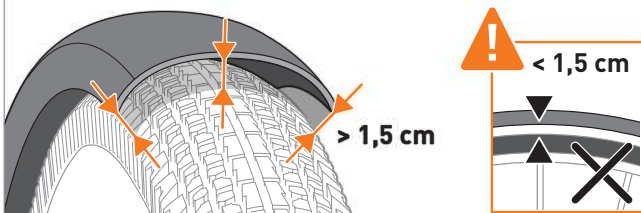
**05 EN**  
Firmly screw the wheel guard (E) to the bottom bracket bearing with screw (K/L/M) and washer (S). Optionally, use spacer (Q) and nut (P).



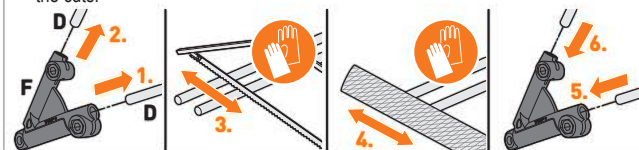
**06 EN**  
Screw the ESC V adapter (F) to the end tips of the bicycle frame hand-tight using screw (K/L/M) and serrated lock washer (O). Optionally, use spacer (Q).



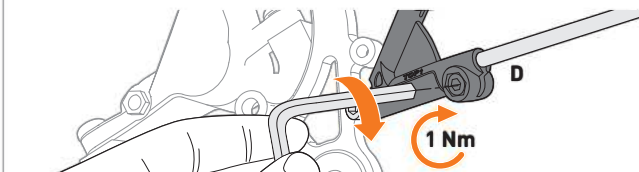
**07 EN**  
**Please note.** Install the rear wheel. Adjust the distance between the wheel guard and the tyre to approx. 1.5 cm.



**i EN**  
If struts (D) are too long, pull them out of the ESC V adapter (F), shorten them with a metal saw and deburr the cuts.



**08 EN**  
Firmly tighten all screws on the struts (D) with 1 Nm.



**09 EN**  
Firmly tighten the ESC V adapters (F) with 3 Nm. In case of mounting variant A of the sliding bridge (C), firmly tighten the screw.



### EN . Safety instructions

Carefully read the entire safety instructions and follow the instructions.

#### Warning levels.

Take note of and adhere to the warnings. Non-compliance can lead to injuries or damage to property!



**Caution!** Indicates hazards that can lead to injuries or damage to property.

#### Safety instructions.

- Injury hazard. The product contains small parts that could be swallowed. Keep the product or individual components away from children.
- Always mount SKS-BLUEMELS wheel guards using the mounting material supplied.
- Injury hazard. Make sure there is sufficient foot space between the wheel guard and the pedal.
- When mounted correctly, the ESC safety system guarantees the free movement of the wheels. During assembly, it is of the utmost importance to make sure that the ESC adapters are properly aligned. Incorrect alignment may prevent the ESC safety system from being triggered.
- After the ESC safety system has been triggered or the ESC adapters have been damaged, replace the entire product.
- Regularly check and retighten all screw connections.

#### Intended use.

Use only for the intended use as a wheel guard. Any other use and/or structural alteration is considered to be not in accordance with the intended use and results in the expiry of the legal and contractual warranty for material defects and product liability.

#### Disposal.



Dispose of packaging material in accordance with the applicable national and regional regulations. When disposing of the product, follow the national and regional disposal regulations.