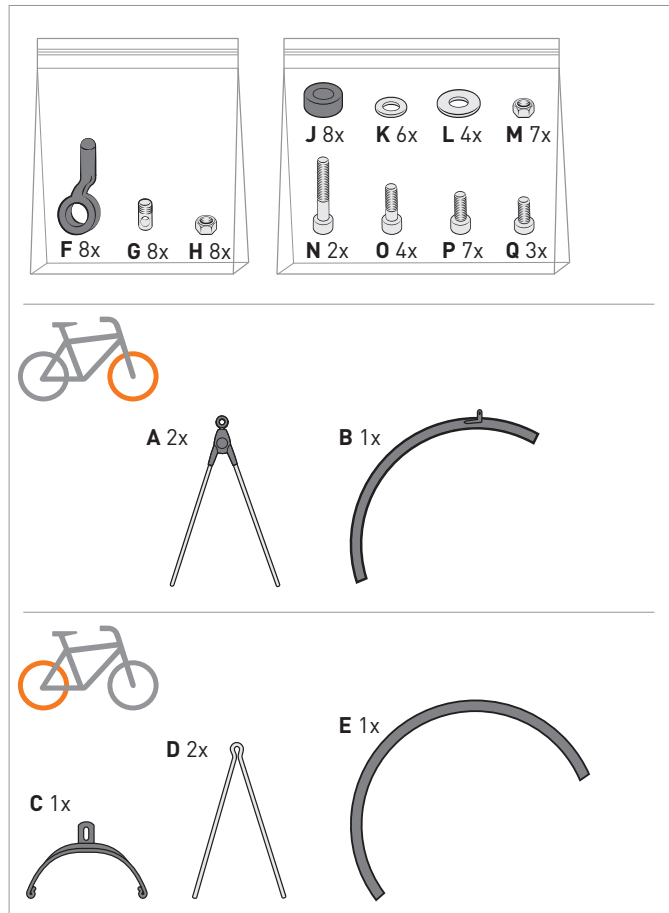
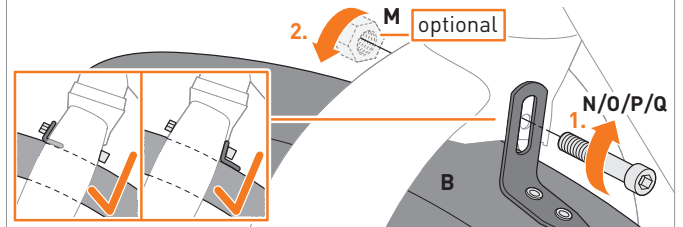


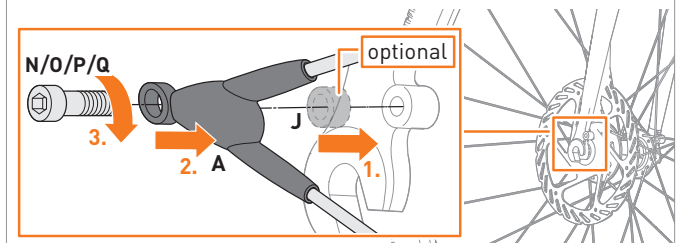
EN . Scope of delivery



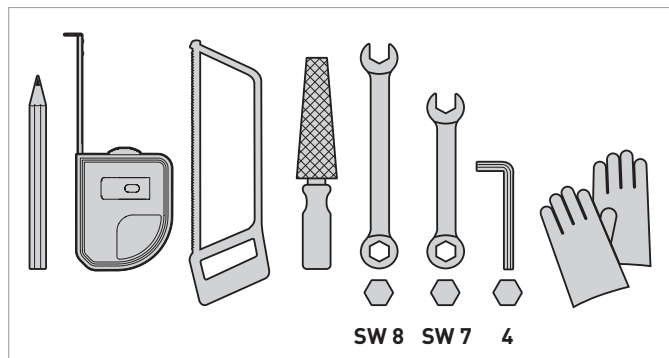
02 EN Screw the bracket of the wheel guard (B) hand-tight to the bicycle fork with the screw (N/O/P). Optionally, use nut (M).



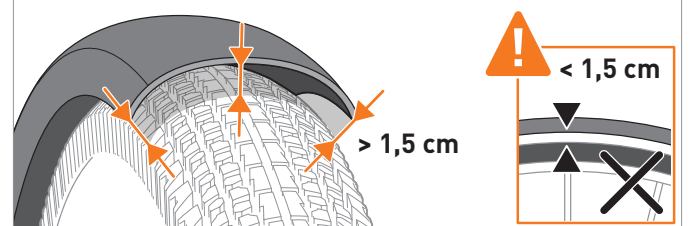
03 EN Screw the struts (A) hand-tight to the fork with screws (N/O/P). Optionally, use spacer (J). **Please note.** In the case of forks with a bore in the direction of travel, an accessory kit is required.



EN . Tools

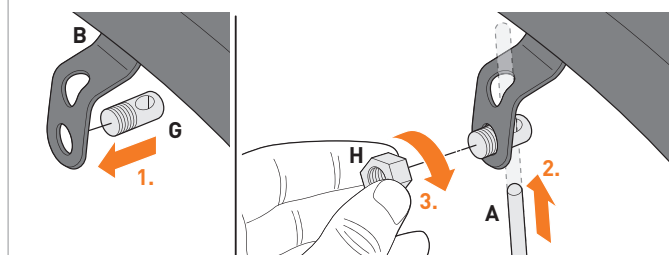


04 EN Adjust the distance between the wheel guard and the tyre to approx. 1.5 cm.

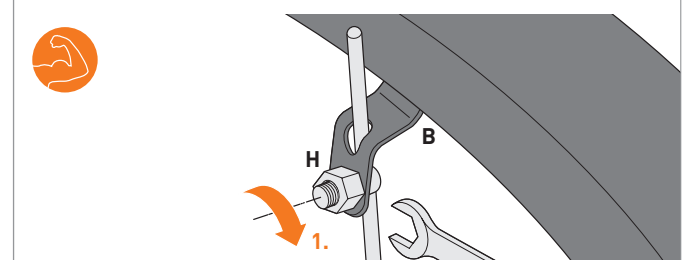


EN . Front wheel mounting

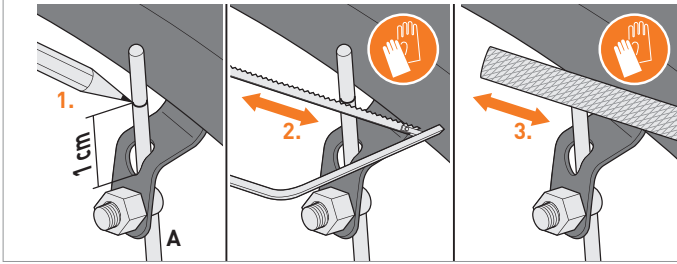
01 EN Insert bolt (G) into the bridges of the wheel guard (B). Push the struts (A) through the bolt and hand-tighten with the nut (H).



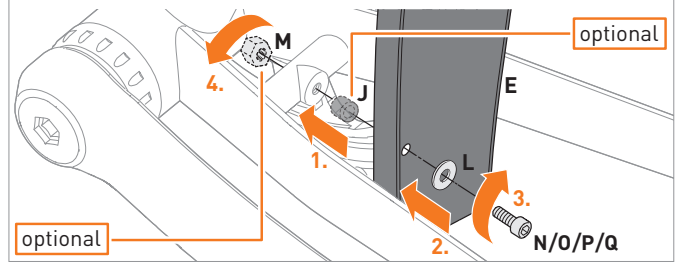
05 EN Tighten the nuts (H) on the bridges of the wheel guard (B).



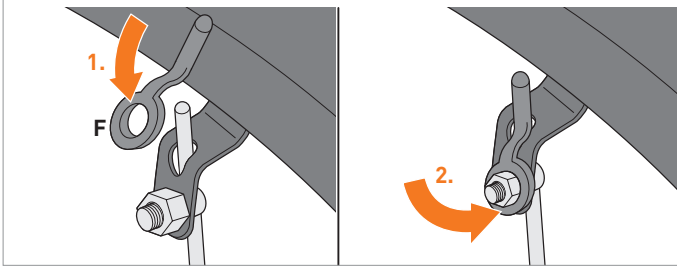
06 EN Use a metal saw to shorten the protruding struts (A) to a protrusion of 1 cm and deburr the cut.



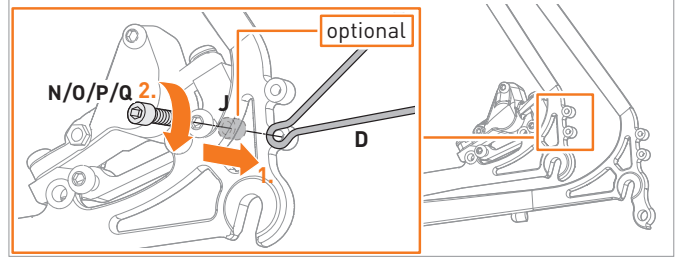
02 EN Firmly tighten wheel guard (E) to bottom bracket bearing with screw (N/O/P) and washer (L). Optionally, use spacer (J) and nut (M).



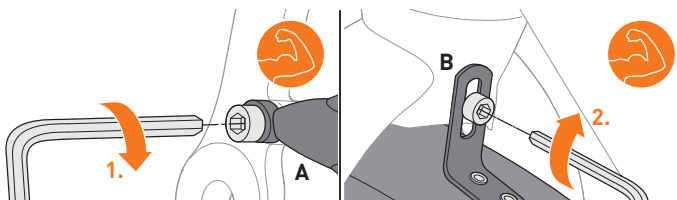
07 EN Place the protective caps (F) on the strut ends and pull them over the nut.



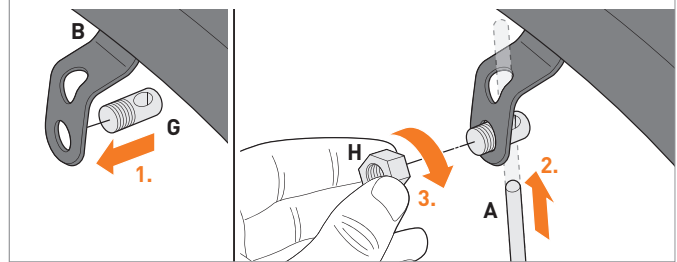
03 EN Screw the struts (D) hand-tight to the end tips of the bicycle frame with screws (N/O/P). Optionally, use spacer (J).



08 EN Tighten all screws on the struts (A) and on the wheel guard (B).

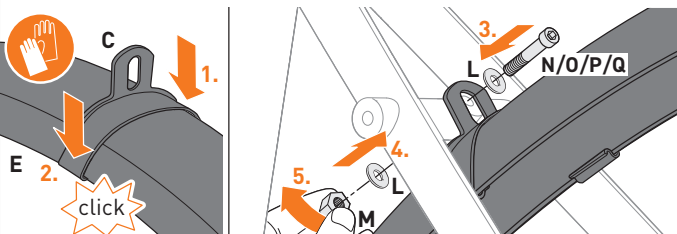


04 EN Insert bolt (G) into bridges of wheel guard (E). Push the struts (D) through the bolt and hand-tighten the nut (H).

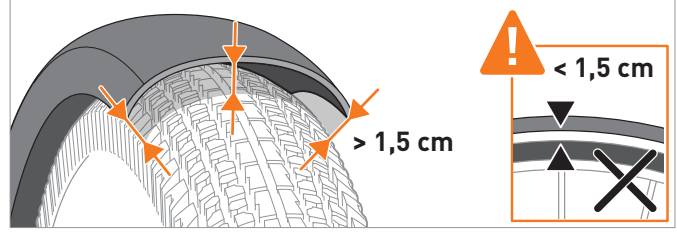


EN . Rear wheel mounting

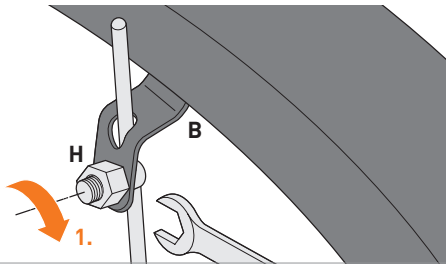
01 EN **Please note.** Remove the rear wheel. Clip the sliding bridge (C) onto the wheel guard (E) and hand-tighten it with the screw (N/O/P), washer (L) and nut (M) on the crossbar between the seat stays.



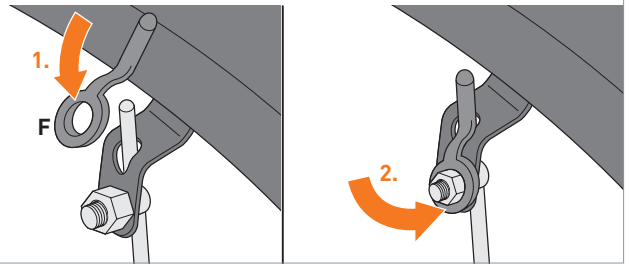
05 EN **Please note.** Install the rear wheel. Adjust the distance between the wheel guard and the tyre to approx. 1.5 cm.



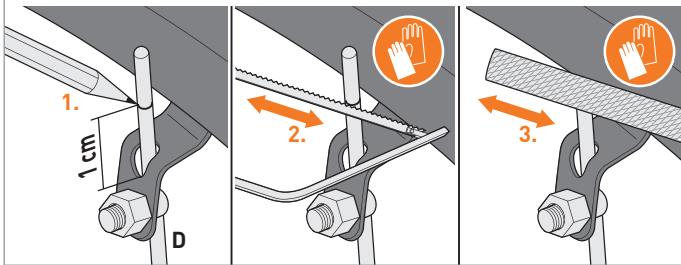
06 EN Firmly tighten the nuts (H) on the bridges of the wheel guard (E).



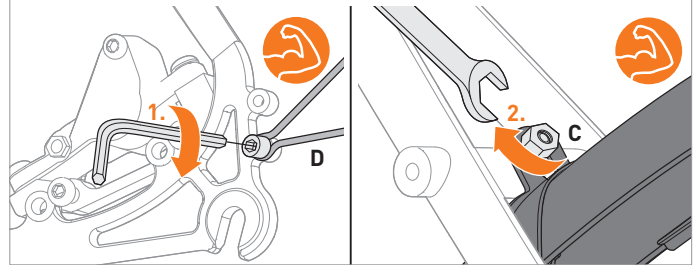
08 EN Place the protective caps (F) on the strut ends and pull them over the nut.



07 EN Use a metal saw to shorten the protruding struts (D) to a protrusion of 1 cm and deburr the cuts.



09 EN Tighten all screws on the struts (D) and on the sliding bridge (C).



EN . Safety instructions

Carefully read the entire safety instructions and follow the instructions.

Warning levels.

Take note of and adhere to the warnings. Non-compliance can lead to injuries or damage to property!



Caution! Indicates hazards that can lead to injuries or damage to property.

Safety instructions.

- Injury hazard.
- The product contains small parts that could be swallowed.
- Keep the product or individual components away from children.
- Always mount SKS-BLUEMELS wheel guards using the mounting material supplied.
- Injury hazard. Make sure there is sufficient foot space between the wheel guard and the pedal.
- Injury hazard. Protruding struts must be shortened during assembly and equipped with protective caps.
- Regularly check and retighten all screw connections.

Intended use.

Use only for the intended use as a wheel guard. Any other use and/or structural alteration is considered to be not in accordance with the intended use and results in the expiry of the legal and contractual warranty for material defects and product liability.



Disposal.

Dispose of packaging material in accordance with the applicable national and regional regulations. When disposing of the product, follow the national and regional disposal regulations.